

COMPANY SYNOPSIS

"We deliver engineering solutions that combine precision, performance, and practicality—transforming ideas into reliable, buildable realities"



WHAT WE DO ?

At **Nexsquare Design Consultants Pvt. Ltd**, we pride ourselves on being the wizards of Structural, Mechanical, Electrical, Plumbing, Fire Protection systems and Value Engineering Services. With a proven reputation in the industry, we bring a wealth of expertise to the table, offering top-notch design consultancy services to a diverse range of clients across all sectors in the construction industry.

ABOUT NEXSQUARE

We are Structural, Mechanical, Electrical, Plumbing & Fire Protection wizards with a proven reputation offering design consultancy services and expertise to a wide range of clients across all sectors in the construction industry. Our engineers take pride in delivering environmentally sustainable, technically robust designs through a proactive and innovative approach. We attract and develop some of the industry's most talented engineers. Our reputation for delivering commercially aware design supported by our Director-level delivery team reinforces our ability to generate long-standing relationships with our clients. At **Nexsquare** our expertise in SMEP&F design and unique client service has proven an attractive combination.



HOW NEXSQUARE CAN HELP YOUR BUILD?

Nexsquare excels in providing SMEP/FP services for all design phases through construction, optimizing construction costs and enhancing energy efficiency through strategic MEP engineering designs.



HELP YOUR BUILD?

Nexsquare has a solution for all your SMEP&F requirements, delivering:

- ◆ Civil & Structural Engineering
- ◆ Public Health Engineering
- ◆ Electrical Engineering
- ◆ Mechanical Engineering
- ◆ Fire Protection Design & Fire approvals
- ◆ Extra Low Voltage (ELV)
- ◆ Integrated Building Management System (IBMS)
- ◆ Value Engineering Services
- ◆ Engineering Report Services

CIVIL & STRUCTURES

Our professionally Structural Engineers utilize the latest in technology to provide safe design and innovative solutions for industrial, medical, residential, and educational projects. No project is too big or small. Uncovering and evaluating potential structural problems and providing creative cost-saving solutions is a large part of what we do.

Nexsquare is proactive in using the latest Building and Residential Codes and respective discipline codes to provide clients with safely designed structures. The buildings we engineer perform well throughout their lifetime and make a positive contribution to society and the environment.

NEW STRUCTURES

When designing a new structure, we balance the costs and benefits of innovation and flexibility with constructability, durability, environmental impact and user satisfaction.

Our service designs span all project delivery phases, including:

- Feasibility studies
- Structural assessment & retrofiting
- Specialized engineering services
- Structured design analysis
- Construction support soirees



MECHANICAL ENGINEERING

What HVAC system is the right system for your building?

Nexsquare prepares custom HVAC system solutions tailored to your needs, maximizing energy efficiency and minimizing construction cost.

Our team of designers and engineers have utilized their many year's of experience, working on the tools, to provide our clients with the very best mechanical design service for heating, ventilating and air conditioning systems. Our design service for all HVAC systems have been successfully implemented in many commercial environments, including office developments, hotels, restaurants, retail and large commercial premises.



ANALYSIS

We identify client's needs according to their choice of site. This allows us to optimize the project design right from the starting.

- Preliminary Study
- Heat Load Calculation
- System Selection
- Scheduled Phases Development
- Due Diligence Study
- Energy Efficiency Analysis
- Mechanical ventilation
- Design
- Pressure Drop Calculations

ELECTRICAL ENGINEERING

How much power do you need for your space?

Today's buildings have more electrical components than ever.

- Load Calculations
- Equipment Selection
- EV Charging Calculations
- Single Line Diagram
- LPS Risk Analysis
- UPS Calculations
- Rasing Main Design
- Lux Level Report
- Energy Management System

Nexsquare prepares Low & High voltage electrical designs, including lighting, mechanical power, electrical rises & single line diagram panel board schedules, specifications, and construction details. We have the resources to provide comprehensive electrical design service for large and complex projects, as well as smaller refurbishments.

Our efficient team of project engineers are professionals to the core.

We know the electrical progress onsite is fundamental to any build, so our team communicate with each trade throughout the development. premises.



PLUMBING ENGINEERING

Where would we be without plumbing?

Water is what sustains us. Our specialty plumbing solutions are designed with efficiency, functionality, and longevity in mind.

Nexsquare plumbing engineering design is essential in our coordinated, interdisciplinary design methodology. We have vast experience in planning and designing plumbing systems, for both gas and water systems for a diverse pool of projects. Every lavatory, sink, toilet, shower, roof drain, dishwasher, pool, spa, gas stove, gas boiler, gas fireplace, or specialty plumbing fixture requires a network of plumbing piping behind the walls to function.



As part of the full plumbing service, you can receive:

- Water Supply - Hot/Cold / Flushing
- Subsoil Drainage
- Fuel Gas Piping System
- Storm Water Design
- Water Conservation
- Sewage Design & Management
- Rain Water Harvesting
- Solid Waste Handling



FIRE ENGINEERING

Our fire safety engineering services include high level strategic advice using detailed bespoke engineering analysis, computer modelling and negotiating positive outcomes for our clients with approvals bodies.

Our fire engineering service team offer a creative approach to developing a simple, but effective fire safety solution for our clients. We have experience of working on various design norms & our team has work experience of various projects executed as per norms like NBC, IS, NFPA, FM & Local Codes etc.

- Fire Life Safety
- Public Addressable System
- Fire Evacuation Plan
- Sprinkler & Hydrant System
- Gas Suppression System
- Pre Action System
- Hydraulic Calculations
- Automatic Fire Alarm System



SECTOR EXPERTISE

LOGISTICS & INDUSTRIAL



INSTITUTION



COMMERCIAL & BUSINESS



RESIDENTIAL & MIXED USE



THE PERSONAL APPROACH

We've gained the loyalty and trust of our clients by maintaining a personal approach to all the projects we've been involved with.

It's important to keep the lines of communication open for every project; that's why we dedicate a team of key professionals to manage each project from conception to completion.

At **Nexsquare**, we are committed to helping our clients create a positive health, safety and environmental culture within their organization.



THE NEXSQUARE DESIGN PROCESS

Our teams at **Nexsquare** adhere to a process for all design work undertaken to ensure our clients can expect a consistently high-quality service that meets your needs.

We work alongside you to understand and help you to achieve your health, safety and environmental goals.



MR. ANIL KUMAR

MANAGING DIRECTOR

Mr. Anil Kumar is the Managing Director of Nexsquare Design Consultants Pvt. Ltd., a dynamic leader with over 29+ years of distinguished experience in structural engineering and design consultancy.

Under his strategic leadership, the organization has consistently delivered high-quality, technically robust, and commercially efficient structural solutions across diverse sectors including high-rise residential

developments, commercial complexes, hospitality projects, healthcare facilities, industrial infrastructure, institutional buildings, and mixed-use developments.

He is instrumental in shaping the company's long-term vision, strengthening client relationships, and driving business expansion. His strong command over project planning, contract management, and execution strategies ensures timely delivery while maintaining uncompromised quality standards.

Prior to leading Nexsquare, Mr. Anil Kumar served in senior leadership roles at reputed consulting firms, including his tenure as Regional Director at Design Tree Consultants, where he successfully handled major regional operations and large-scale projects.

Known for his decisive leadership style, deep market insight, and hands-on involvement, he fosters a culture of technical excellence, accountability, and collaborative growth. His ability to seamlessly coordinate with architects, developers, contractors, and stakeholders has been a cornerstone of the company's continued success.

As Managing Director, he oversees corporate governance, operational management, and strategic development, ensuring Nexsquare remains a trusted and forward-thinking engineering partner.



"WE DELIVER ENGINEERING SOLUTIONS THAT COMBINE PRECISION, PERFORMANCE, AND PRACTICALITY—TRANSFORMING IDEAS INTO RELIABLE, BUILDABLE REALITIES"

STRATEGIC LEADERSHIP

K. S. N. MURTHY

DIRECTOR

Mr. K. S. N. Murthy is a highly accomplished construction and project management professional with **30+ years of comprehensive experience** overseeing large-scale civil, infrastructure, industrial, and high-rise building projects. With deep expertise in Planning, Budgeting, QS & Cost Management,

Tendering, Documentation, Vendor finalization, Cost Control ensuring alignment with client objectives, technical standards, and managing complete project lifecycles from concept to commissioning.

He is currently serving as **Director** at **Nexsquare Design Consultants Pvt. Ltd.**, where he leads project planning, execution oversight, and multidisciplinary coordination. He has successfully delivered landmark projects including **Hotels, Malls, Industrial, Bottling plants, High-rise Towers, Educational Institutions, IT parks, SEZ developments, Residential townships, Villa communities, and PEB structures**. His core strengths include BOQ preparation, rate analysis, tender evaluations, contractor negotiations, construction scheduling, site quality monitoring, progress reporting, and effective stakeholder coordination. Mr. Murthy is widely recognised for streamlining processes, resolving on-site challenges, and ensuring seamless collaboration between architects, consultants, contractors, and clients.

Prior to this, Mr. Murthy spent **15 years** with **DesignTree Service Consultants Pvt. Ltd.**, where he served as **Head – Quantity Surveying**. During his tenure, he ensured stringent cost control, consistently achieving final project costs within the approved tender limits demonstrating exceptional financial discipline and cost governance.

He began his career with **M.R. Warerkar & Associates**, progressing from Junior Engineer to Project Manager, where he handled **PEPSI** bottling plants Greenfield projects across India. He later contributed in key technical roles at **Potential Service Consultants, Kirloskar Electric Co. Ltd.**, and **Madura Garments (Aditya Birla Group)**, managing major factory expansions, utility buildings, and corporate infrastructure developments.



DHAYALAN PALANISAMY

TECHNICAL DIRECTOR – STRUCTURES

Mr. Dhayalan Palanisamy is an accomplished **Structural Engineer** with **20+ years of experience** in civil and structural engineering, specialising in the planning, analysis, design, and delivery of complex building structures across residential, commercial, institutional, healthcare, industrial, and infrastructure sectors. He has a proven track record of managing large multidisciplinary teams, coordinating with key stakeholders, and ensuring timely and efficient completion of major projects.



He has strong technical expertise in **Reinforced Concrete, Structural Steel, and Pre-Stressed Concrete** systems, with advanced proficiency in leading engineering tools such as **ETABS, SAFE, AutoCAD, and STAAD-Pro**. His core strengths include concept design, detailed analysis, design review, structural optimization, peer review, AC checking, and technical coordination with architects, MEP consultants, and PMC teams.

Mr. Dhayalan is currently associated with **Nexsquare Design Consultants Pvt. Ltd.**, as **Technical Director**, where he leads structural design teams and oversees major developments.

He has successfully contributed to major high-rise developments for reputed clients such as **Aparna, Ramky, Raghava, Suvarna Durga, Muppa Projects**, and others—successfully handling engineering responsibilities for towers reaching up to **G+61 floors**.

Previously, he served as **Principal Engineer** at **Buro Happold**, contributing to landmark projects such as **Prestige Park Grove, Godrej Ramaiah, Godrej Yeshwanthpur, and Embassy Zenith**, handling complete structural design from basements to high-rise towers.

He Started his structural engineering career with **Umesh B Rao & Company (2006–2007)** as a Structural Design Engineer.

Then Joined with **Potential Service Consultants India Pvt. Ltd.**, as **Structural Designer** with corporate projects including **Lodha Belleza Tower – Hyderabad** and **Capgemini – Pune**. Later continued journey as **Senior Structural Designer** at **CPG Consultants India Pvt. Ltd.**, handling large developments such as **Century Central, Hou Gang River Court (Singapore), Global Technology Park, and Ozone Urbana**.

Mr. Dhayalan's portfolio also includes major **structural steel projects** such as **EV Factory (Odisha), Unilever Warehouse (Odisha), Navjyoti (Chitradurga), Gravity Zip (Hyderabad)**, and the **55-meter truss span at KTPO (Bangalore)**.

With strong analytical insight, deep technical expertise, and a client-focused approach, Mr. Dhayalan continues to deliver robust, safe, and well-engineered structural solutions for complex and multi-disciplinary projects.

PRASHANTKUMAR NIMBAL

ASSOCIATE TECHNICAL DIRECTOR

Mr. Prashantkumar Nimbal, Associate Technical Director at Nexsquare Design Consultants Pvt. Ltd., has over 15 years of specialized experience in the design, engineering, and implementation of fire protection systems including suppression and alarm systems.



He possesses deep expertise in fire safety engineering, life safety design, and regulatory compliance across sectors such as high-rise residential, commercial, industrial, healthcare, hospitality, airports, data centres, and institutional buildings. His work emphasizes risk mitigation, code compliance, and adherence to Indian Fire Codes, NBC guidelines, and NFPA standards.

Highly skilled in hydraulic calculations, design validation, and advanced tools like CAD and BIM (Revit), Mr. Nimbal delivers optimized and efficient fire protection designs. He has extensive experience with super high-rise projects above 150 m, involving complex pressure zoning, refuge floor planning, and high-capacity suppression systems.

His collaborative approach with architects, structural, MEP teams, and contractors ensures integrated, high-performance, and compliant fire safety solutions. Previously, he held key roles at DesignTree, Larsen & Toubro Construction, and AECOM India, contributing to large-scale infrastructure developments.

With involvement in 200+ major projects, his notable works include Ghail and Navi Mumbai International Airports, AIIMS & TIMS Hospital (Hyderabad), Amazon and Sterlite Data Centres, IIT Bombay, Bhabha Atomic Research Centre, Surat Diamond Bourse, Rajapushpa and Vasavi Group residential projects, among others.

Mr. Nimbal's technical proficiency and leadership make him a key contributor to complex fire protection design and life safety engineering in large-scale and high-rise developments.

G. CHAITANYA KUMAR

TECHNICAL HEAD – ELECTRICAL

Mr. G. Chaitanya Kumar is a **Technical Head** at **Nexsquare Design Consultants Pvt. Ltd.**, with 14+ years of progressive experience, specialising in **Electrical System Design, Planning, Load Calculations, Equipment Selection, BOQ Preparation, Tender Documentation, and multidisciplinary coordination.** His expertise spans a broad range of project typologies, including high-end IT parks, commercial developments, premium



residential high-rises, hospitals, educational institutions, warehouses, and large industrial/PEB facilities. He is widely recognised for his structured project handling, technical precision, and timely delivery of design outputs across all project stages.

Mr. Chaitanya leads electrical engineering operations with a strong focus on quality, safety, and regulatory compliance. He consistently delivers robust and efficient design solutions aligned with **ECBC, NBC, BISFS, NEC, IER,** and local electrical utility standards. His capabilities include the preparation of spatial layouts, schematic and GFC drawings, design briefs, technical specifications, detailed project reports, and contractor design approvals, complemented by effective coordination with HVAC, plumbing, and life-safety services.

His project portfolio features landmark developments for reputed clients such as **IRDA, Hexagon, CTS, Wells Fargo, Divyasree IT Parks, GAR Corp, Aparna, Salarpuria Sattva, Ramky, Phoenix, Raheja Corp, Raghava, NSL, Auro Realty, Muppa, Indorama, Tata Advance System limited (TASL), P & G, Jindal And Pronava** reflecting his versatility across diverse infrastructure and building sectors.

He commenced his career with **Sai Sri Engineers** as an Electrical Designer, later advancing to **DesignTree Service Consultants Pvt. Ltd.** as a Design Engineer. He subsequently served as **Team Lead – Electrical Designs** at **Diligent Design Consultants & Vide Engineering Consultants Pvt, Ltd.** where he successfully led major projects, design coordination efforts, and quality assurance processes.

CH. KISHORE

TECHNICAL HEAD - PHE

Mr. CH Kishore is a **Technical Head** at **Nexsquare Design Consultants Pvt. Ltd.**, holding a Postgraduate degree in Engineering Design and bringing **14+ years of specialised experience** in Public Health Engineering (PHE). He has a strong command of national and local building codes and is known for delivering precise, efficient, and compliant design solutions for a wide spectrum of projects, including **residential, commercial, industrial, hospitality, healthcare, educational, and warehouse developments.**



With deep expertise in mechanical codes, plumbing standards, and integrated building services, Kishore excels in managing complex, fast-paced engineering environments. His experience spans **high-rise residential towers, IT parks, corporate office spaces, hospitals, hotels, malls, industrial facilities, plotted layouts, and large villa communities**, consistently ensuring optimal system performance and design efficiency.

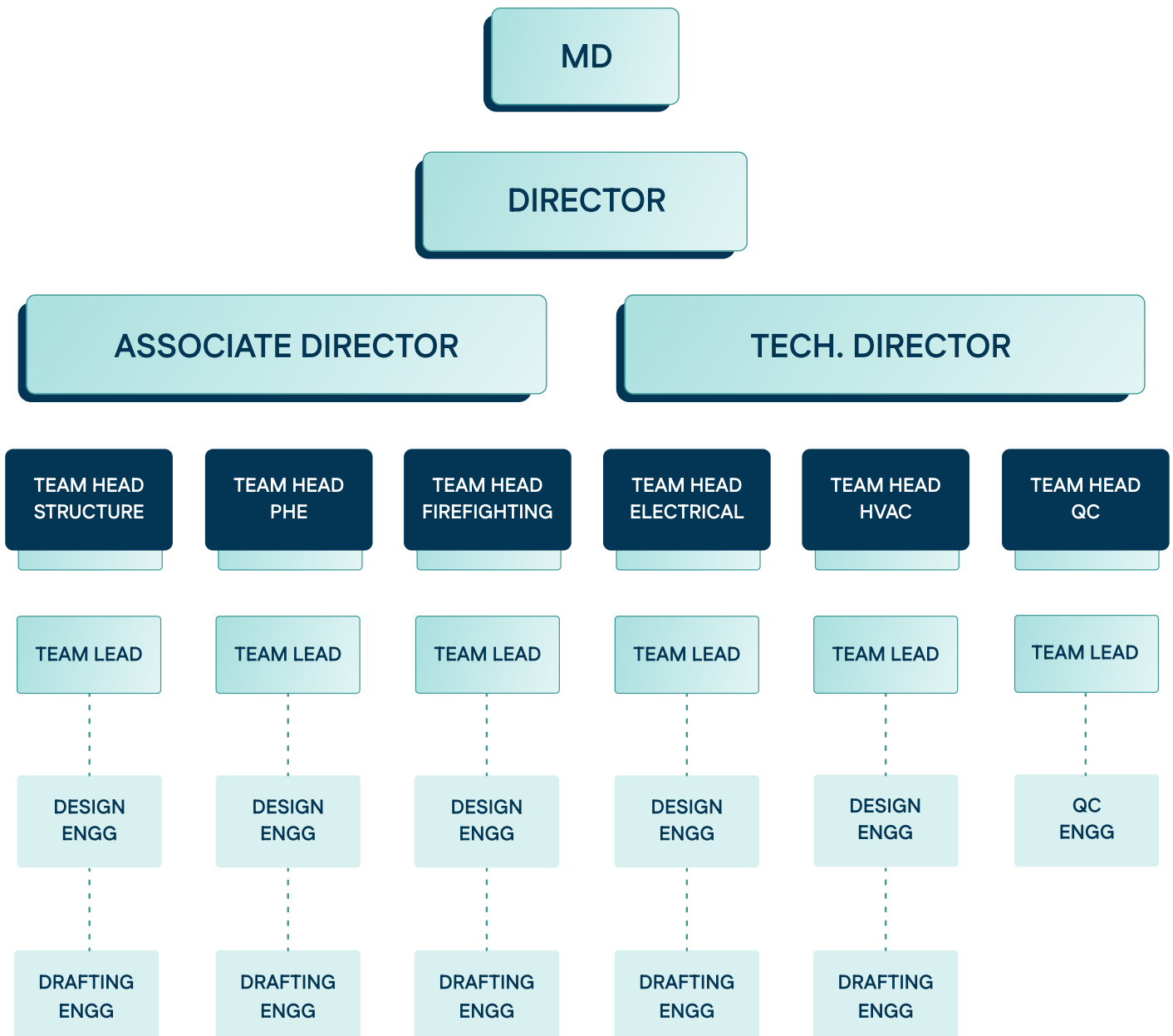
He has successfully contributed to major high-rise developments for reputed clients such as **MyHome, Aparna, Ramky, Phoenix, Raheja Corp, Raghava, Suvarna Durga, GAR Corp, NSL, Fortune Group, Auro Realty, Muppa Projects**, and others—successfully handling engineering responsibilities for towers reaching up to **G+61 floors.**

He began his professional journey with **L&T Hydrocarbon Engineering Ltd.**, and later advanced his career through senior engineering and leadership roles at **Esve Design Solutions Pvt. Ltd.** and **DesignTree Service Consultants Pvt. Ltd.**, where he managed large-scale developments as a Senior Design Engineer and Team Lead.

ORGANIZATION STRUCTURE

Our teams at **Nexsquare** adhere to a process for all design work undertaken to ensure our clients can expect a consistently high-quality service that meets your needs.

We work alongside you to understand and help you to achieve your health, safety and environmental goals.



OUR CLIENTS



OUR PROJECTS

NOVA BY RAGHAVA



LOCATION :
**@FINANCIAL
DISTRICT,
HYDERABAD**



TYPE OF OCCUPANCY :
RESIDENTIAL



BUILT UP AREA :
**46.55 LAKH
SFT**



BUILDING
CONFIGURATION :
**2-TOWERS,
6 BASEMENTS +
STILT + 61 FLOORS
SKY DECK**

OUR PROJECTS

CINQ BY RAGHAVA



LOCATION :
**@NARAKRAM
GUDA,
HYDERABAD**



TYPE OF OCCUPANCY :
RESIDENTIAL



BUILT UP AREA :
**44.80 LAKH
SFT**



BUILDING
CONFIGURATION :
**5 TOWERS,
5 BASEMENTS +
GROUND+ 61
FLOORS**

OUR PROJECTS

NSL NAKSHATHRA



LOCATION :
**@KUKATPALLY,
HYDERABAD**



TYPE OF OCCUPANCY :
RESIDENTIAL



BUILT UP AREA :
**9.40 LAKH
SFT**



BUILDING
CONFIGURATION :
**4 BASEMENTS +
STILT + 2 CLUB
HOUSES + 39
FLOORS**

OUR PROJECTS

THE EMINENT BY RAMKY



LOCATION :
**@RAGENDRA
NAGAR,
HYDERABAD**



TYPE OF OCCUPANCY :
RESIDENTIAL



BUILT UP AREA :
**19.20 LAKH
SFT**



BUILDING
CONFIGURATION :
**4 TOWERS,
3 BASEMENTS +
GROUND FLOOR +
30 FLOORS**

OUR PROJECTS

RAMKY @ THANISANDRA



LOCATION :
**@THANISANDRA,
BANGALORE**



TYPE OF OCCUPANCY :
RESIDENTIAL



BUILT UP AREA :
**6.00 LAKH
SFT**



BUILDING
CONFIGURATION :
**2 TOWERS,
2 BASEMENTS +
STILT FLOOR + 28
FLOORS**

OUR PROJECTS

APR



LOCATION :
**@NEOPOLIS,
HYDERABAD**



TYPE OF OCCUPANCY :
RESIDENTIAL



BUILT UP AREA :
**27.85 LAKH
SFT**



BUILDING
CONFIGURATION :
**4 BASEMENTS +
STILT + CLUB HOUSE
+ 57 FLOORS**

OUR PROJECTS

MAHAVEER ORCHID WILLOW



LOCATION :
**@BHEL,
HYDERABAD**



TYPE OF OCCUPANCY :
RESIDENTIAL



BUILT UP AREA :
**10.55 LAKH
SFT**



BUILDING
CONFIGURATION :
**4 BASEMENTS +
GROUND FLOOR +
36 FLOORS**

OUR PROJECTS

AURO SAPPHIRE



LOCATION :
**@SERILINGAM
PALLY,
HYDERABAD**



TYPE OF OCCUPANCY :
RESIDENTIAL



BUILT UP AREA :
**32.75 LAKH
SFT**



BUILDING
CONFIGURATION :
**4- TOWERS + 4
BASEMENTS +
GROUND + 47
FLOORS**

OUR PROJECTS

PRANAVA ONE - D



LOCATION :
**@SOMAJIGUDA,
HYDERABAD**



TYPE OF OCCUPANCY :
RESIDENTIAL



BUILT UP AREA :
**4.50 LAKH
SFT**



BUILDING
CONFIGURATION :
**3 BASEMENTS +
STILT FLOOR + 24
FLOORS+
CLUBHOUSE**

OUR PROJECTS

APARNA BLUE BELLS



LOCATION :
**@KOMPALLY,
HYDERABAD**



TYPE OF OCCUPANCY :
RESIDENTIAL



BUILT UP AREA :
**8.50 LAKH
SFT**



BUILDING
CONFIGURATION :
**3 TOWERS +
2 BASEMENTS +
G + 14 FLOORS +
CLUBHOUSE**

OUR PROJECTS

NIHARIKA ONE



LOCATION :
**@KHAJAGUDA,
HYDERABAD**



TYPE OF OCCUPANCY :
RESIDENTIAL



BUILT UP AREA :
**13.40 LAKH
SFT**



BUILDING
CONFIGURATION :
**4 BASEMENTS
+ STILT FLOOR
+ 40 FLOORS**

OUR PROJECTS

SAGE BY RAGHAVA



LOCATION :
**@KOLLUR,
HYDERABAD**



TYPE OF OCCUPANCY :
VILLAS



BUILT UP AREA :
**8.80 LAKH
SFT**
ACRES :
21.00



BUILDING
CONFIGURATION :
**169 VILLAS G+2
FLOOR +
CLUBHOUSE**

OUR PROJECTS

THE RESERVE BY RAMKY



LOCATION :
**@HARSHAGUDA,
HYDERABAD**



TYPE OF OCCUPANCY :
VILLAS



BUILT UP AREA :
**7.00 LAKH
SFT**
ACRES :
24.00



BUILDING
CONFIGURATION :
**99 VILLAS G+2
FLOORS +
CLUBHOUSE**

OUR PROJECTS

THE SPECTRUM BY RAMKY



LOCATION :
**@KOREMULLA,
HYDERABAD**



TYPE OF OCCUPANCY :
VILLAS



BUILT UP AREA :
**4.40 LAKH
SFT**

ACRES :
13.00



BUILDING
CONFIGURATION :
**151 VILLAS G+2
FLOOR +
CLUBHOUSE**

OUR PROJECTS

APARNA PRIVE VILLAS



LOCATION :
**@KOMPALLY,
HYDERABAD**



TYPE OF OCCUPANCY :
VILLAS



BUILT UP AREA :
**2.75 LAKH
SFT**
ACRES :
8.00



BUILDING
CONFIGURATION :
**38 VILLAS G+2
FLOOR +
CLUBHOUSE**

OUR PROJECTS

ARK ARYAMA & ARTHA



LOCATION :
**@KONGARA
KALAN,
HYDERABAD**



TYPE OF OCCUPANCY :
VILLAS



BUILT UP AREA :
**7.70 LAKH
SFT**
ACRES :
19.87



BUILDING
CONFIGURATION :
**183 VILLAS G+2
FLOOR +
CLUBHOUSE**

OUR PROJECTS

NSL SOULSCAPE



LOCATION :
**@IBRAHIMBAGH,
HYDERABAD**



TYPE OF OCCUPANCY :
VILLAS



BUILT UP AREA :
**2.20 LAKH
SFT**
ACRES :
5.20



BUILDING
CONFIGURATION :
**36 VILLAS G +2
FLOORS +
CLUBHOUSE**

OUR PROJECTS

NSL ONE ONLY



LOCATION :
**@IBRAHIMBAGH,
HYDERABAD**



TYPE OF OCCUPANCY :
VILLAS



BUILT UP AREA :
**6.50 LAKH
SFT**
ACRES :
20.00



BUILDING
CONFIGURATION :
**50 VILLAS G+2
FLOORS +
CLUBHOUSE**

OUR PROJECTS

UNNATHI VILLA'S BY AURO REALITY



LOCATION :
**@MUNIRABAD,
HYDERABAD**



TYPE OF OCCUPANCY :
VILLAS



BUILT UP AREA :
**4.86 LAKH
SFT**
ACRES :
43.12



BUILDING
CONFIGURATION :
**349 VILLAS G+ 2
FLOORS +
CLUBHOUSE**

OUR PROJECTS

MUPPA SWARNAPRASTHA VILLAS



LOCATION :
**@VELIMALA,
HYDERABAD**



TYPE OF OCCUPANCY :
VILLAS



BUILT UP AREA :
**10.45 LAKH
SFT**
ACRES :
29.00



BUILDING
CONFIGURATION :
**219 VILLAS
G + 2 FLOORS +
CLUBHOUSE**

OUR PROJECTS

RAGHAVA CORPORATE OFFICE



LOCATION :
**@NANAKRAM
GUDA,
HYDERABAD**



TYPE OF OCCUPANCY :
COMMERCIAL



BUILT UP AREA :
**2.75 CASH
SFT**



BUILDING
CONFIGURATION :
**3 BASEMENTS +
GROUND FLOOR +
9 FLOORS**

OUR PROJECTS

PRANAVA MALL & MULTIPLEX



LOCATION :
**@HASTINA
PURAM,
HYDERABAD**



TYPE OF OCCUPANCY :
COMMERCIAL



BUILT UP AREA :
**2.35 LAKH
SFT**



BUILDING
CONFIGURATION :
**2 BASEMENTS +
GROUND FLOOR +
5 FLOORS**

OUR PROJECTS

SHANKARA FOUNDATION



LOCATION :
**@KANAKAPURA
MAIN ROAD,
BANGLORE**



TYPE OF OCCUPANCY :
HOSPITAL



BUILT UP AREA :
**0.90 LAKH
SFT**



BUILDING
CONFIGURATION :
**1 BASEMENT +
GROUND FLOOR +
4 FLOORS**

OUR PROJECTS

PRANAVA EAST CREST



LOCATION :
@HASTINAPUR,
HYDERABAD



TYPE OF OCCUPANCY :
RESIDENTIAL



BUILT UP AREA :
1.20 LAKH
SFT



BUILDING
CONFIGURATION :
2 BASEMENTS +
GROUND FLOOR +
10 FLOORS

OUR PROJECTS

BREEZE IN THE COURT YARD



LOCATION :
**@KONDAKAL,
HYDERABAD**



TYPE OF OCCUPANCY :
RESIDENTIAL



BUILT UP AREA :
**8.25 LAKH
SFT**



BUILDING
CONFIGURATION :
**3 TOWERS + 2
BASEMENTS + STILT
FLOOR + 10FLOORS
+ CLUB HOUSE**

OUR PROJECTS

CASA GRAND



LOCATION :
**@AMEENPUR,
HYDERABAD**



TYPE OF OCCUPANCY :
RESIDENTIAL



BUILT UP AREA :
**14.95 LAKH
SFT**



BUILDING
CONFIGURATION :
**6 TOWERS + 2
BASEMENTS +
GROUND FLOOR +
11 FLOORS + CLUB
HOUSE**

OUR PROJECTS

CENTURY



LOCATION :
**@VADERAPURA,
BANGLORE**



TYPE OF OCCUPANCY :
RESIDENTIAL



BUILT UP AREA :
**3.25 LAKH
SFT**



BUILDING
CONFIGURATION :
**3 BASEMENTS +
GROUND FLOOR +
12 FLOORS**

OUR PROJECTS

VAISHNAOI GARUDA



LOCATION :
**@MAMIDIPALLY,
HYDERABAD**



TYPE OF OCCUPANCY :
RESIDENTIAL



BUILT UP AREA :
**7.50 LAKH
SFT**



BUILDING
CONFIGURATION :
**3 TOWER +2
BASEMENTS +
GROUND + 12
FLOORS + CLUB
HOUSE**

OUR PROJECTS

MANBHUM



LOCATION :
**@MOOSAPET,
HYDERABAD**



TYPE OF OCCUPANCY :
RESIDENTIAL



BUILT UP AREA :
**2.70 LAKH
SFT**



BUILDING
CONFIGURATION :
**2 BASEMENTS +
+STILT + 10
FLOORS**

OUR PROJECTS

LAKE VIEW GRANDEUR



LOCATION :
**@TURKAYAMJAL ,
HYDERABAD**



TYPE OF OCCUPANCY :
RESIDENTIAL



BUILT UP AREA :
**1.50 LAKH
SFT**



BUILDING
CONFIGURATION :
**2 TOWERS + 1
BASEMENTS + 2
STILT + 10 FLOORS +
CLUBHOUSE**

OUR PROJECTS

ALLTIA



LOCATION:
**@DARJEELING,
WEST BENGAL**



TYPE OF OCCUPANCY :
RESORT



PLOT AREA:
17.32 ACRES
BUILT UP AREA:
**1.90 LAKH
SFT**



BUILDING
CONFIGURATION:
**VARIES FROM
GROUND FLOOR +
2 FLOORS TO 4 FLOORS**

OUR PROJECTS

SASAN GIR



LOCATION:
**@GUJARAT,
AHMEDABAD**



TYPE OF OCCUPANCY :
RESORT



PLOT AREA:
24.35 ACRES
BUILT UP AREA:
**2 LAKH
SFT**



BUILDING
CONFIGURATION:
**VARIES FROM
GROUND FLOOR +
2 FLOORS TO 4 FLOORS**

Nex²



Nexsquare Design Consultants Pvt. Ltd.



Hyderabad Address : Nexsquare Design Consultants Pvt. Ltd,
4th floor, Sreshta Marvel, Gachibowli - Miyapur Rd, P Janardhan Reddy Nagar, Gachibowli,
Hyderabad, Telangana 500032



83091 71831



admin@thenexsquare.com



Bengaluru Address : Nexsquare Design Consultants Pvt. Ltd,
91 Springboard, Gopala Krishna Complex 45/3, Residency Road, Mahatma Gandhi Rd,
Bengaluru, Karnataka 560025

"We deliver engineering solutions that combine precision, performance, and practicality—transforming ideas into reliable, buildable realities"